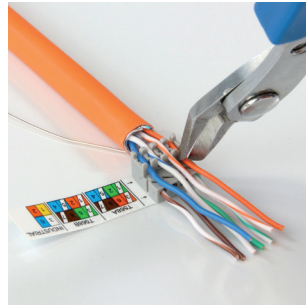


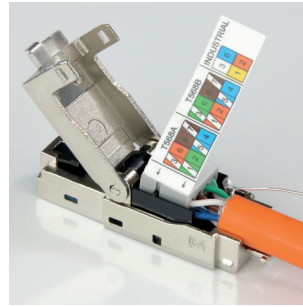
Easy Crimp Field Plugs



1. Insert the cable into the strain relief boot, strip off 30mm of the cable jacket, fold back the drain wire



2. Fan out all 4 twisted pairs, allocate each conductor into the proper slot on the wiring cap by following the colour coding label. Trim the excess lengths.

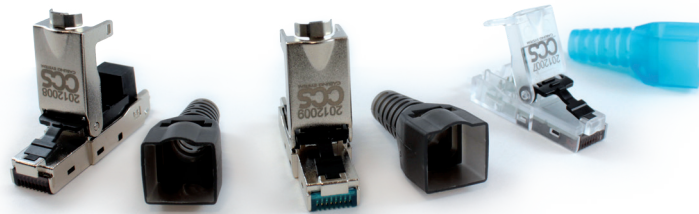


3. Remove the wiring label before placing the wire cap on the plug. Use a plier to clamp it until it completely snaps-in.



4. Close the plug cover, pull back the strain relief boot to cover the plug, fasten the supplied cable tie.

**Easy Crimp shielded plugs
CAT. 6 STP OR 6_A STP**
for applications up to
10G Ethernet
full die-cast body



**Easy Crimp unshielded plug
CAT. 6 UTP**
for application up to
Gigabit Ethernet



YOUR KEY BENEFITS

- Suitable for solid and flexible conductors with sections up to 22AWG
- Easy and quick toolless connection without the use of crimping tools or pliers
- Re-termination 10 times with easy opening EASY CRIMP system
- Ideal for the realization of MPTL, transition points or patch cords out of the standard lengths
- It supports PoE /PoE+/PoE++ applications
- IEEE 802.3 af/at/bt applications
- ISO/IEC 11801 – EN 50173 standards compliant



CERTIFIED AND GUARANTEED

CCS® unshielded and shielded field plugs are suitable for the realization of the modular plug terminated link (MPTL) according to the latest ANSI/TIA 568.2-D standard