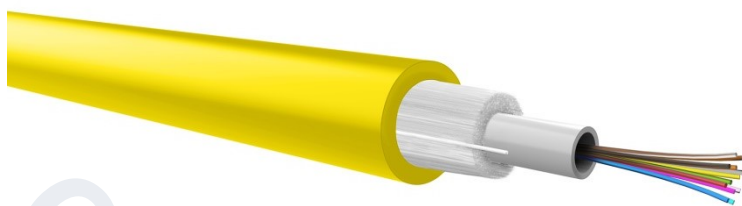
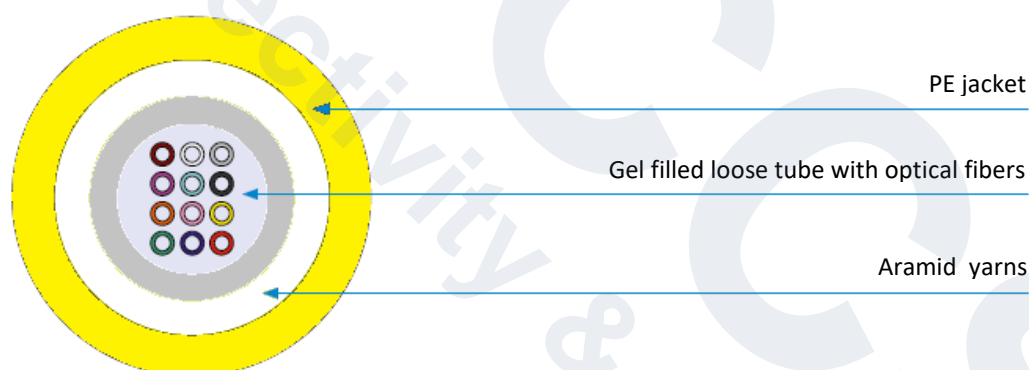


Tipologia Cavo	<b>A-DQ(ZN)2Y</b>
Descrizione	<b>Outdoor central loose tube cable, 4-12 OF, PE jacket, Fca</b>



### A-DQ(ZN)2Y

Outdoor loose type DROP optical cables containing singlemode fibres 9/125 G.657.A2 Bend Insensitive with 250µm primary coating, outer PE (polyethylene) jacket, Euroclass Fca. The optical fibres are contained in a single thermoplastic tube and immersed in a buffering gel as protection against humidity. These cables are suitable for FTTH (Fiber To The Home) applications.



### Constructive characteristics

Cores	Gel-filled Loose tube
Filler protection	Aramid yarns
Optical fiber type	Single-mode 9/125 type G,657.A2 Bend Insensitive
Outer jacket material	PE (polyethylene), UV resistant
Jacket color	Yellow
Armour	Dielectric
Cable outer diameter	3,4 ± 0,1 mm
Nominal weight	10 Kg/Km
Marking	CCS by Qubix - "product code" - FO Cable A -DQ(ZN)2Y - "1xn FO" - "fiber type" - PE jacket - meters - lot - FID - Euroclass Fca - n° DOP

### Mechanical and environmental properties

Use	Outdoor
Bend. radius (installation)	15 x outer diameter
Bend. radius (long term)	10 x outer diameter
Max. pull strength	250 N (25 kg max.)
Crush resistance	1000 N/dm
Installation temperature	from -15°C to +50°C
Operating temperature	from -15°C to +70°C

Tipologia Cavo	<b>A-DQ(ZN)2Y</b>
Descrizione	<b>Outdoor central loose tube cable, 4-12 OF, PE jacket, Fca</b>

**Reference standards**

Cables and optical fibers	EN 60793 EN 60794-1 ITU-T G.657.A2
Structured cabling	EN 50173-1 ISO/IEC 11801 ANSI/TIA 568.3-D

**Fire behavior**

CRP regulation	EN 50575 Euroclass Fca
----------------	------------------------

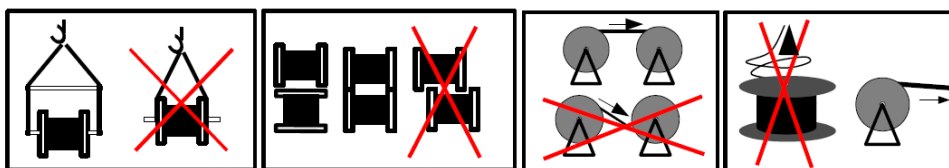
**Packaging**

Drum	2000 mt ± 5%
------	--------------

**Reference codes**

Cores number	1x4	1x8	1x12
Cod.	2008456	2008457	2008458

**Recommendations of use**



Tipologia Cavo	<b>A-DQ(ZN)2Y</b>
Descrizione	<b>Outdoor central loose tube cable, 4-12 OF, PE jacket, Fca</b>

## SINGLE-MODE OPTICAL FIBER SPECIFICATIONS

<i>Optical fiber type</i>	<i>9/125 OS2 (ITU G.657.A2)</i>
Cladding diameter	125 ± 0,7 μm
Primary coating diameter	235-245 μm
Cladding Non-Circularity	≤ 0,7%
Concentricity error core/cladding	≤ 0,5 μm
Concentricity error cladding/coating	≤ 12 μm
Attenuation λ=1310 nm	≤ 0,35 dB/Km
Attenuation λ=1550 nm	≤ 0,30 dB/Km
Attenuation λ=1625 nm	≤ 0,40 dB/Km
Group Index @ 1310 nm	1,467
Group Index @ 1550 nm	1,468
Cable cut-off wavelength	λ <sub>cc</sub> ≤ 1260 nm
Zero-dispersion wavelength λ <sub>0</sub>	1302-1322 nm
Slope at λ <sub>0</sub>	S <sub>0</sub> ≤ 0,092 ps/(nm <sup>2</sup> ·Km)
Mode field diameter @ 1310 nm	8,4-9,2 μm
Mode field diameter @ 1550 nm	9,4-10,4 μm
PMD	≤ 0,1 ps/√Km
Tensile Proof Test	100 kpsi (0.69 GPa)
Macrobending 10 turns, 15 mm, @ 1,550 nm	≤ 0,03 dB
Macrobending 10 turns, 15 mm, @ 1,625 nm	≤ 0,1 dB
Macrobending 1 turn, 10 mm, @ 1,550 nm	≤ 0,1 dB
Macrobending 1 turn, 10 mm, @ 1,625 nm	≤ 0,2 dB
Macrobending 1 turn, 7.5 mm, @ 1,550 nm	≤ 0,5 dB
Macrobending 1 turn, 7.5 mm, @ 1,625 nm	≤ 1,0 dB

*Optical fibers are fully compliant with IEC/EN 60793-1, IEC/EN 60793-2, EN 50173 and ISO/IEC 11801*